



N 2-Bedroom Beachfront

This direct ocean view, 2-Bedroom Beachfront residence was thoughtfully-designed with flexibility for family use or rental options. It can be enjoyed as a full 2-bedroom/3-bath residence, or as two separate accommodations including a: 1-Bedroom/ 1-Bath oceanfront suite (with a great room, separate master suite, full kitchen, and washer/dryer); and a separate 1-Bedroom/ 2-Bath oceanfront guest apartment (featuring a master suite, living/dining area, small kitchen, and washer/dryer). Bathrooms feature double vanities, and a walk-in shower. This residence features two sleeper sofas and accommodates up to eight people.



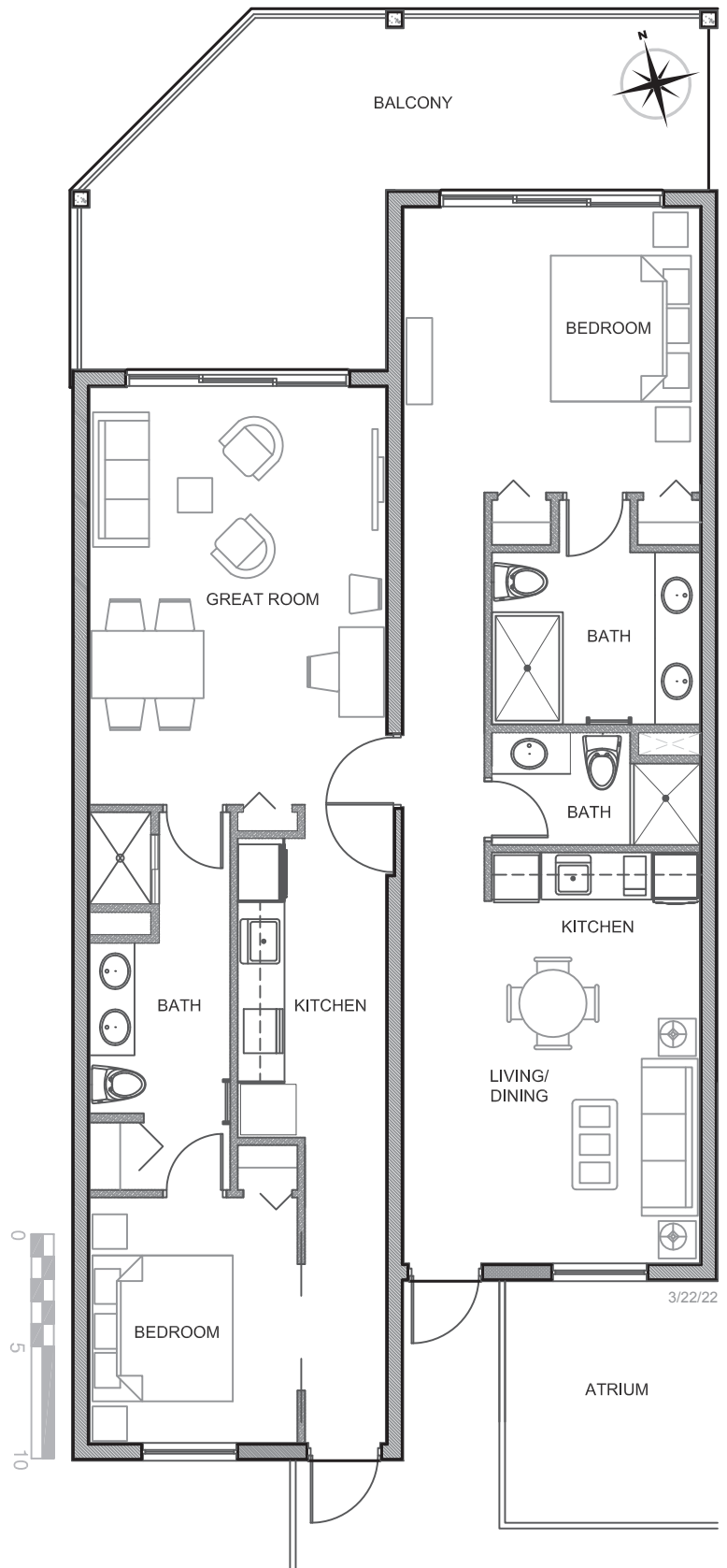
Windsong Residence 4410-20

2 Bedroom/3 Bath with Lock-Out Feature

Living Area	1380 sq. ft.
Balcony	313 sq. ft.
Total Area	1,693 sq. ft.

These drawings are conceptual only and are subject to change without notice. The developer reserves the right to make alterations, additions, and deletions to the drawings as the developer may deem appropriate or desirable in his sole discretion. The residence square footage totals are approximate, may vary due to construction, and are based on perimeter measurements.

GRACE BAY



Grace Bay, Providenciales, Turks & Caicos Islands

Toll Free (US/Canada) • 1-855-WINDSONG (946-3766) • Direct 1-649-946-3766 • realestate@windsongresort.com