

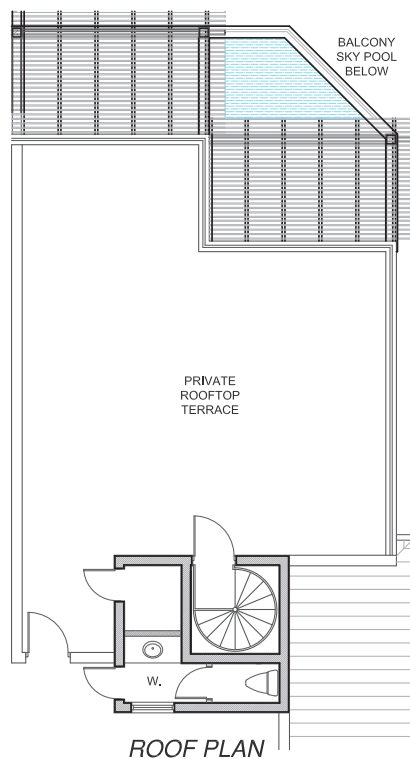


## K Penthouse

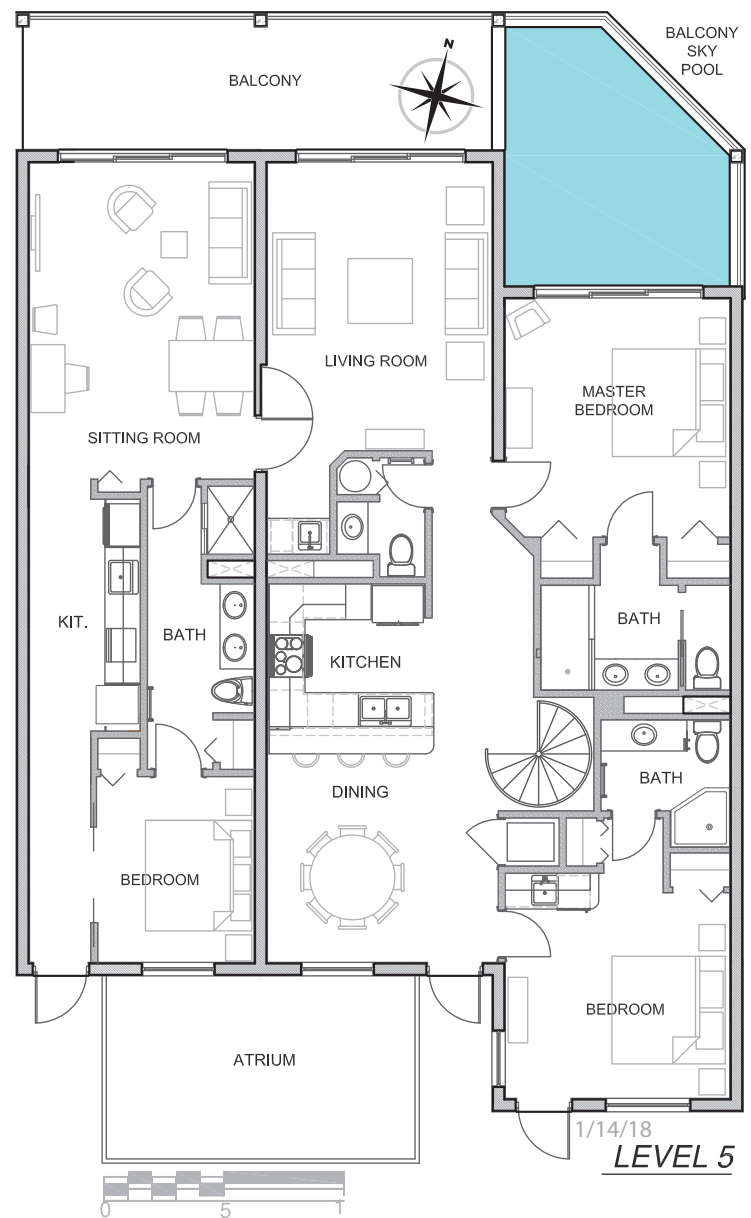
The spacious, luxury Penthouse offers flexibility of use and rental capability with these configurations:

- 1) A 3-Bedroom/3.5 Bath Oceanfront residence
- 2) A 2-Bedroom/2.5 Bath Oceanfront that can attach or lock-out to a 1-Bedroom/1-Bath Oceanfront guest apartment with kitchenette and washer/dryer
- 3) Two 1-Bedroom apartments with kitchenette and washer/dryer, and a 1-Bedroom Lock-Out

The Penthouse features a gourmet kitchen, luxurious master suite, and a refreshing, balcony sky pool that is accessible from the master bedroom and adjacent balcony. Unique to the Penthouse is a thoughtfully designed roof top terrace with direct, unobstructed ocean views beyond an all-glass balcony railing. The terrace is furnished with a six-person Jacuzzi, BBQ, dining and seating/loungers.



GRACE BAY



### Windsong Residence 4570-90

#### 3 Bedroom/3.5 Bath/Private Rooftop Terrace

Living Area	2061 sq. ft.
Balcony	225 sq. ft.
Balcony Infinity Pool	202 sq. ft.
Private Sundeck	936 sq. ft.
<b>Total Area</b>	<b>3,424 sq. ft.</b>

These drawings are conceptual only and are subject to change without notice. The developer reserves the right to make alterations, additions, and deletions to the drawings as the developer may deem appropriate or desirable in his sole discretion. The residence square footage totals are approximate, may vary due to construction, and are based on perimeter measurements.

Grace Bay, Providenciales, Turks & Caicos Islands

Toll Free (US/Canada) • 1-855-WINDSONG (946-3766) • Direct 1-649-946-3766 • [realestate@windsongresort.com](mailto:realestate@windsongresort.com)